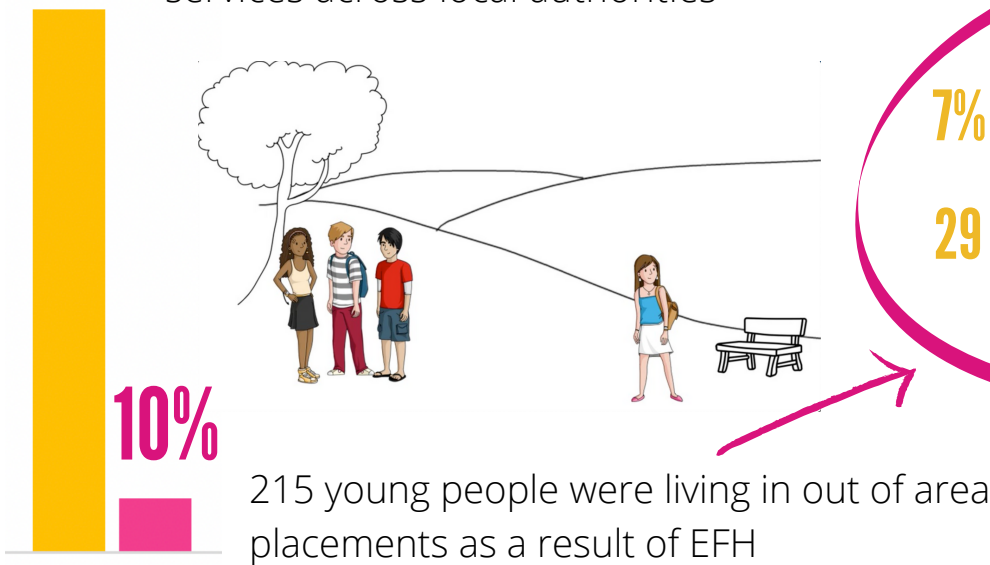


RELOCATION AND EXTRA-FAMILIAL HARM

We surveyed 13 local authorities across England and Wales to capture **snapshot data** on the rate at which **relocation** was used as a **response to extra-familial harm (EFH)** in England and Wales during September 2019

2,128 young people affected by EFH were supported by children's and families' services across local authorities



7% of these young people were relocated more than once

29 additional relocations were in the planning phase across local authorities



The **rate** at which young people impacted by EFH were

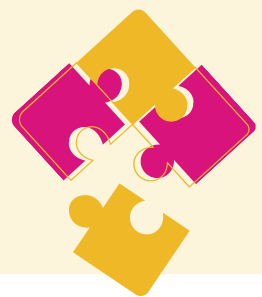
RELOCATED

varied across local authorities from

0% to **24%**



Local authorities reported a number of **gaps in their evidence base** in how they recorded and reported extra-familial harm and how they documented different types of relocation

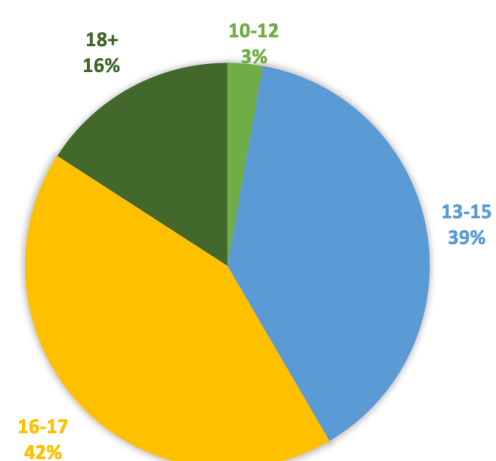
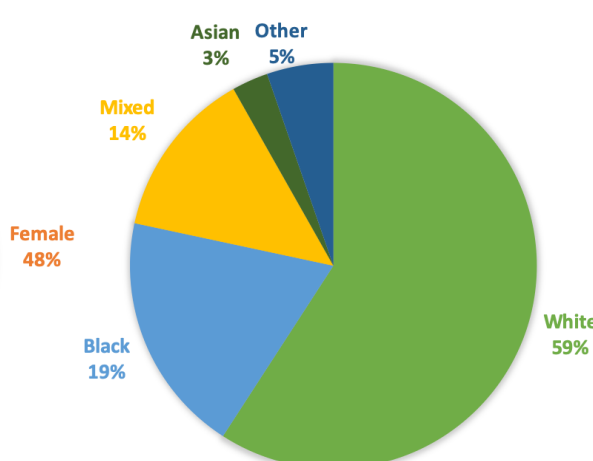
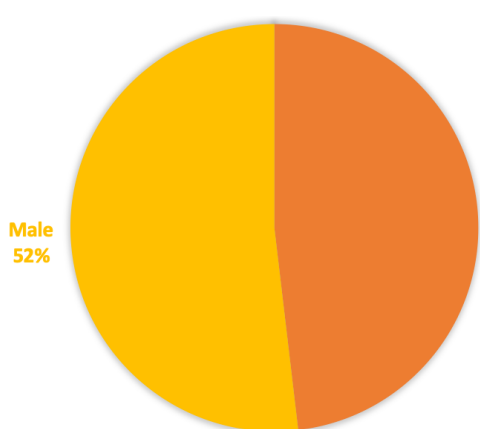


Professionals were asked to collect **demographic data** on the young people who were identified as being in out of area placements due to EFH

GENDER

ETHNICITY

AGE



Note: Data was missing for young people across some local authorities

41 young people were reported by professionals as having a diagnosed disability

6 out of 13 local authorities did not return disability data

